



ONE

BY L'ATELIER art et objet

## ONE: LEATHER ARTISTRY

Experience the epitome of sophistication with “ONE,” a collection of handcrafted leather artworks by l’atelier. Meticulously designed frames by Eric Kuster, while Kuster’s exclusive “Shades” paint collection harmoniously matches seven luxurious suede colors. “ONE” redefines artistic luxury, blending craftsmanship and visionary design into timeless masterpieces.

The collection exist out of four distinct designs, each piece is a unique masterpiece crafted with meticulous artisanship. No two artworks are alike, showcasing the commitment to individuality and artisanal excellence that defines “ONE.”

Explore the world of art and craftsmanship at L’Atelier Art et Objet! Immerse yourself in a journey of creativity and inspiration by visiting the website.

[www.l-atelierartetobjet.co.uk](http://www.l-atelierartetobjet.co.uk)



ONE

BY L'ATELIER art et objet

# WRINKLE



Wrinkle, a captivating art piece where leather is meticulously folded to create an extra dimension. Each carefully crafted fold adds a unique touch, transforming 'Wrinkle' into a tactile masterpiece that invites exploration.



ONE

BY L'ATELIER art et objet

# DESERT ROSE



“Introducing ‘Desert Rose,’ a masterpiece crafted with depth and adorned with handmade flourishes. Each element is designed, creating a visual journey that unfolds with every glance. ‘Desert Rose’ captivates with its intricate details and thoughtful touches, offering a tactile experience that goes beyond the surface.



# ONE

BY L'ATELIER art et objet

# FLOW



Meet Flow: a handcrafted art piece of luxury leather suede. Its fluid, organic lines beautifully contrast with bold graphic frames. This masterpiece effortlessly blends soft elegance with structured design, offering a captivating visual experience.



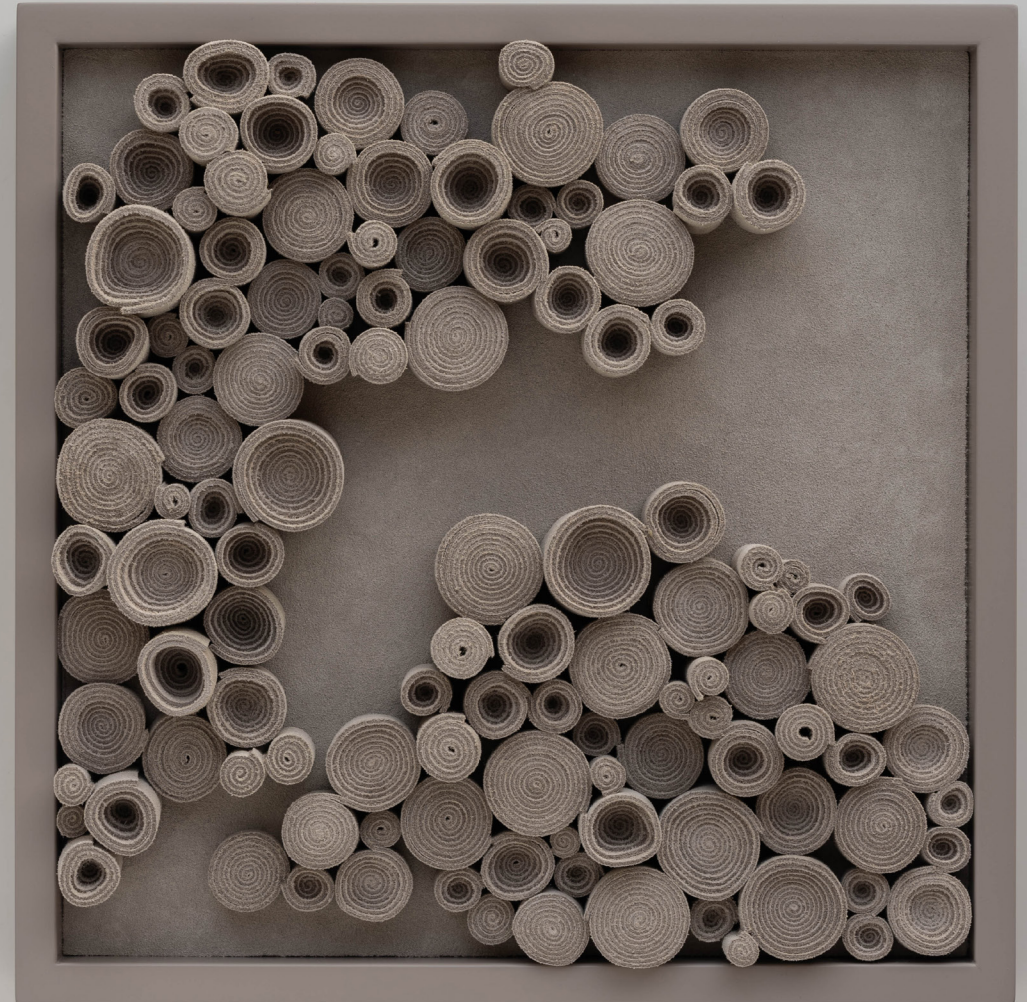
ONE

BY L'ATELIER art et objet

# SKYLINE

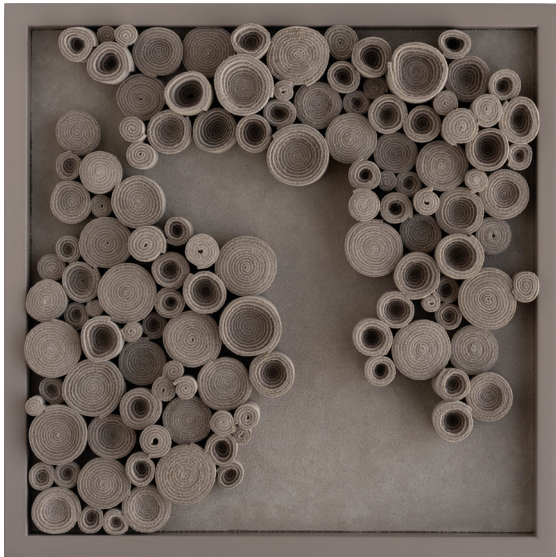


Skyline, a captivating artwork that delves into the depths of expression. Crafted with detail, this piece features hand-turned rolls that create a dynamic height variation, reminiscent of a city skyline. The interplay of these carefully crafted elements imparts a sense of allure, drawing the viewer into a visual journey that echoes the urban landscape.



# ONE

BY L'ATELIER art et objet



SKYLINE



DESERT ROSE



FLOW



WRINKLE



## PRICELIST

RETAIL PRICE EX. VAT

HEIGHT	WIDTH	WRINKLE	DESERT ROSE	FLOW	SKYLINE
300	300	€ 546,00	€ 624,00	€ 702,00	€ 936,00
300	600	€ 847,00	€ 968,00	€ 1.089,00	€ 1.452,00
300	900	€ 1.148,00	€ 1.312,00	€ 1.476,00	€ 1.968,00
300	1200	€ 1.449,00	€ 1.656,00	€ 1.863,00	€ 2.484,00
300	1500	€ 1.757,00	€ 2.008,00	€ 2.259,00	€ 3.012,00
300	1800	€ 2.058,00	€ 2.352,00	€ 2.646,00	€ 3.528,00
300	2100	€ 2.366,00	€ 2.704,00	€ 3.042,00	€ 4.056,00
300	2400	€ 2.660,00	€ 3.040,00	€ 3.420,00	€ 4.560,00
600	600	€ 1.211,00	€ 1.384,00	€ 1.557,00	€ 2.076,00
600	900	€ 1.575,00	€ 1.800,00	€ 2.025,00	€ 2.700,00
600	1200	€ 1.946,00	€ 2.224,00	€ 2.502,00	€ 3.336,00
600	1500	€ 2.310,00	€ 2.640,00	€ 2.970,00	€ 3.960,00
600	1800	€ 2.674,00	€ 3.056,00	€ 3.438,00	€ 4.584,00
600	2100	€ 3.038,00	€ 3.472,00	€ 3.906,00	€ 5.208,00
600	2400	€ 3.402,00	€ 3.888,00	€ 4.374,00	€ 5.832,00
900	900	€ 2.009,00	€ 2.296,00	€ 2.583,00	€ 3.444,00
900	1200	€ 2.436,00	€ 2.784,00	€ 3.132,00	€ 4.176,00
1200	1200	€ 3.311,00	€ 3.784,00	€ 4.257,00	€ 5.676,00

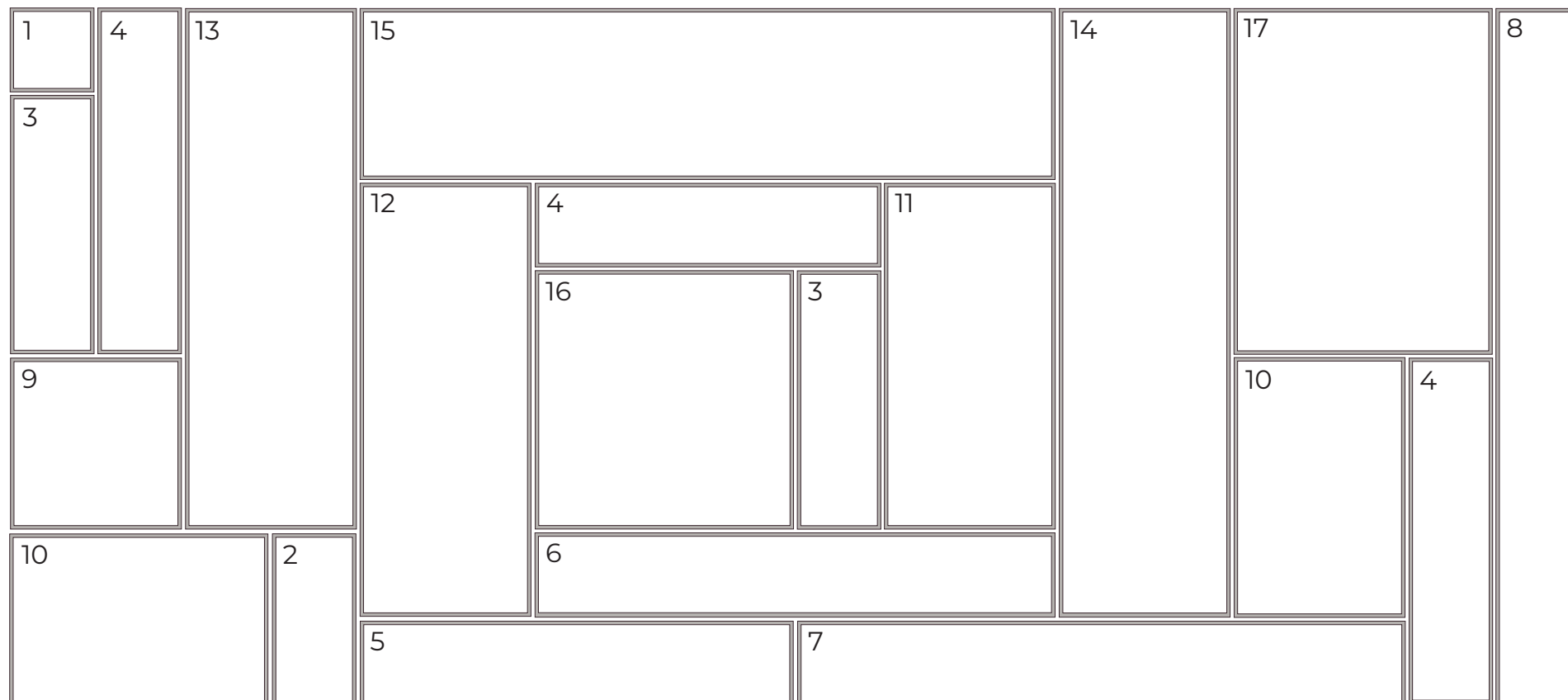
\* For inquiries regarding custom sizes, please contact us at [office@alphenberg.com](mailto:office@alphenberg.com). Our team will be delighted to assist you in creating a bespoke solution that suits your requirements.

# ONE

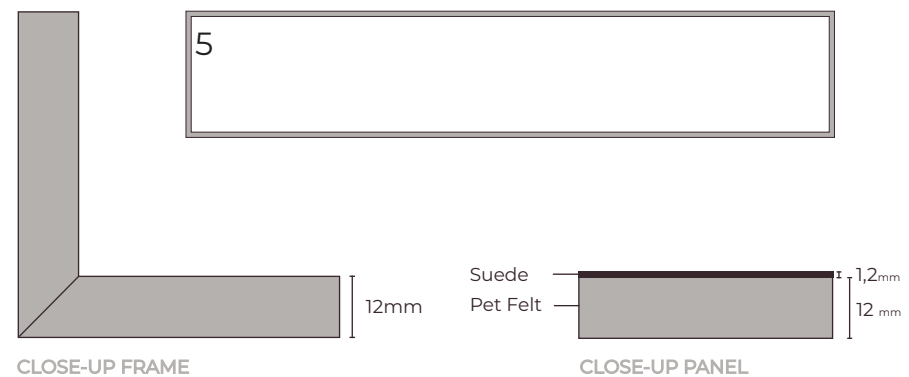
BY L'ATELIER art et objet



# SPECIFICATIONS



	HEIGHT	WIDTH		HEIGHT	WIDTH
1	300 mm	300 mm	10	600 mm	900 mm
2	300 mm	600 mm	11	600 mm	1200 mm
3	300 mm	900 mm	12	600 mm	1500 mm
4	300 mm	1200 mm	13	600 mm	1800 mm
5	300 mm	1500 mm	14	600 mm	2100 mm
6	300 mm	1800 mm	15	600 mm	2400 mm
7	300 mm	2100 mm	16	900 mm	900 mm
8	300 mm	2400 mm	17	900 mm	1200 mm
9	600 mm	600 mm	18	1200 mm	1200 mm



# SPECIFICATIONS

## Suede specifications

Type: European bovine hide

Top layer: Sanded

Thickness: 1.2-1.4 mm

## Curated colors & Leather

### shades

Ash

Dune

Desert

Sage

Quarts

Basalt

Soil

### leather

suede

suede

suede

suede

suede

suede

suede

Musk

Papyrus

Earth

Mouton

Dodo

Whisper

Caribou



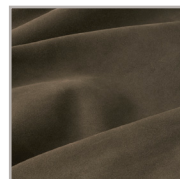
LAMB



EARTH



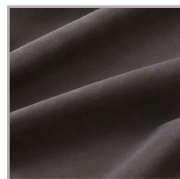
MOUTON



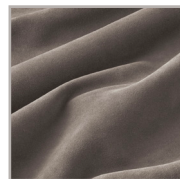
MUSK



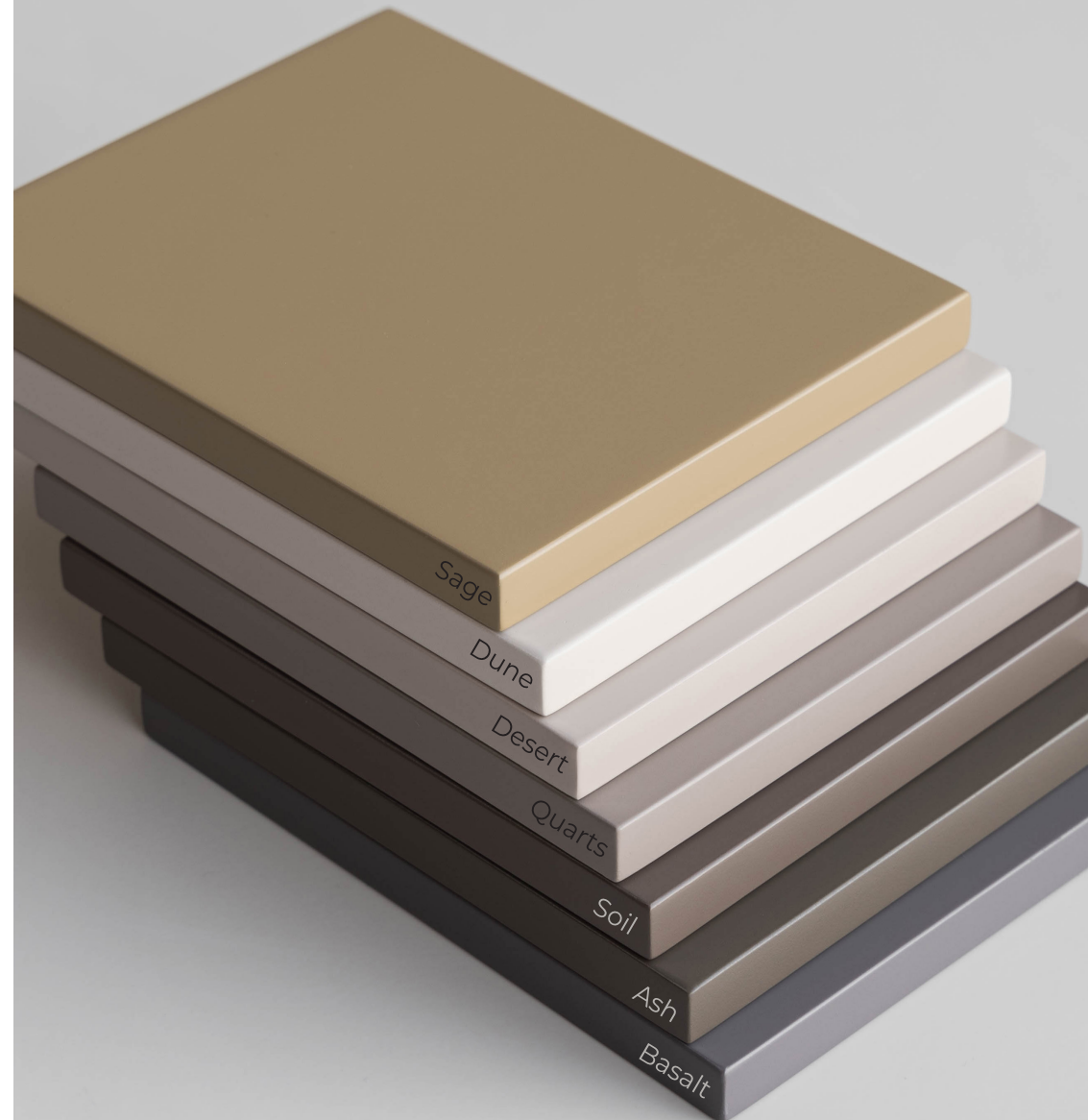
DODO



WHISPER



CARIBOU



POWERED BY

**ALPHENBERG**®

leather

T H E O R I G I N A L

**HEADOFFICE**

Tielenstraat 7 | 5145 RC Waalwijk | The Netherlands

FLAGSHIP STORE

**SHOWROOM**

Grotestraat 180 | 5141 HD Waalwijk | The Netherlands

office@alphenberg.com | +31 [0] 73 747 0085

W W W . A L P H E N B E R G . C O M